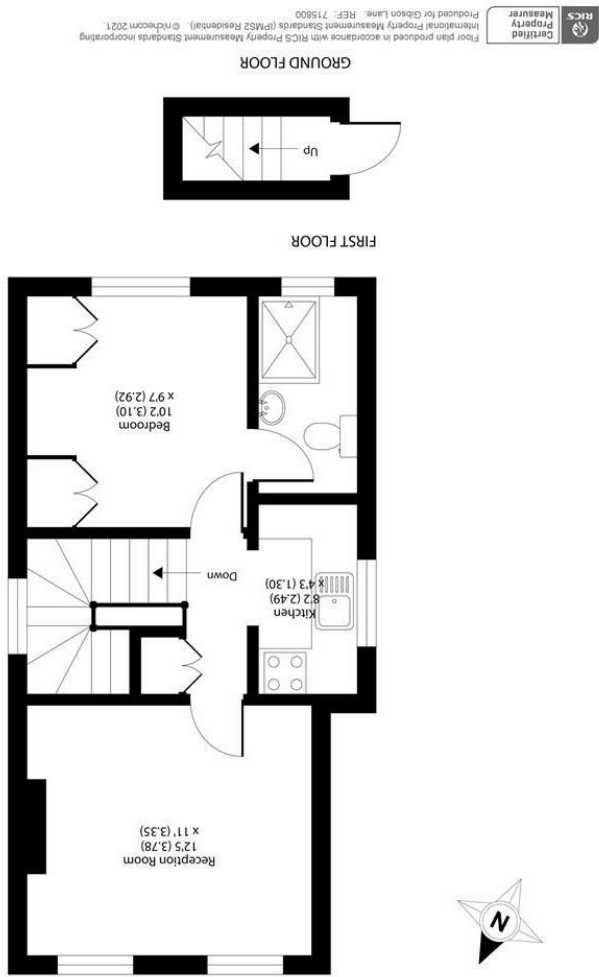


Important Information
 All appliances listed in these details are only 'as seen' and have not been tested by Gibson Lane, nor have we sought certification of warranty or service, unless otherwise stated. Measurements, areas and distances are approximate. Floor plans and photographs are for guidance purposes only and must not be relied upon for any purpose. These details are offered on the understanding that all negotiations are made through this company. Neither these particulars, nor verbal representations, form part of any offer or contract, and their accuracy cannot be guaranteed.

England & Wales	
Energy Efficiency Rating	B
Environmental Impact (CO ₂) Rating	C



Approximate Area = 415 sq ft / 38.6 sq m
 For identification only - Not to scale

34 Richmond Road
 Kingston upon Thames
 Surrey
 KT2 6ED
 www.gibsonlane.co.uk
 Tel: 020 8546 5444



Richmond Park Road
 Kingston Upon Thames KT2 6AH



Richmond Park Road

Kingston Upon Thames KT2 6AH

Guide Price £280,000

An impressive one bedroom, apartment presented to an exceptionally high standard and ideally located close to Kingston Town Centre and Richmond Park.

Description

A well presented first floor, one bedroom apartment with its own private entrance and Share of Freehold located on a stunning tree lined, residential road close to both Kingston town centre and Richmond Park. The flat has been tastefully decorated internally and offers a kitchen, large reception room, one double bedroom and a modern bathroom. The property benefits from sole access to loft storage. Viewings are highly recommended to appreciate what this property has to offer!

Situation

Richmond Park Road is a sought after residential street ideally situated in the ever popular North Kingston area. The property is conveniently positioned for Kingston station giving direct access into Waterloo and the A3 which serves both London & the M25. Kingston town centre with its array of shops, restaurants and bars is a short distance away.

Tenure: Share of Freehold
Local Authority: Kingston Upon Thames

